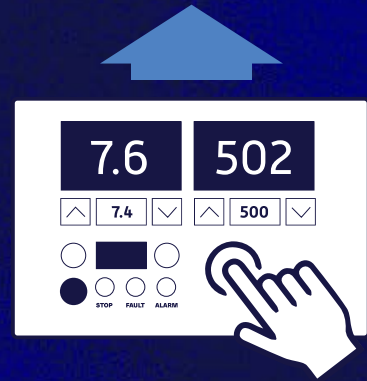


**Touchscreen Controller**

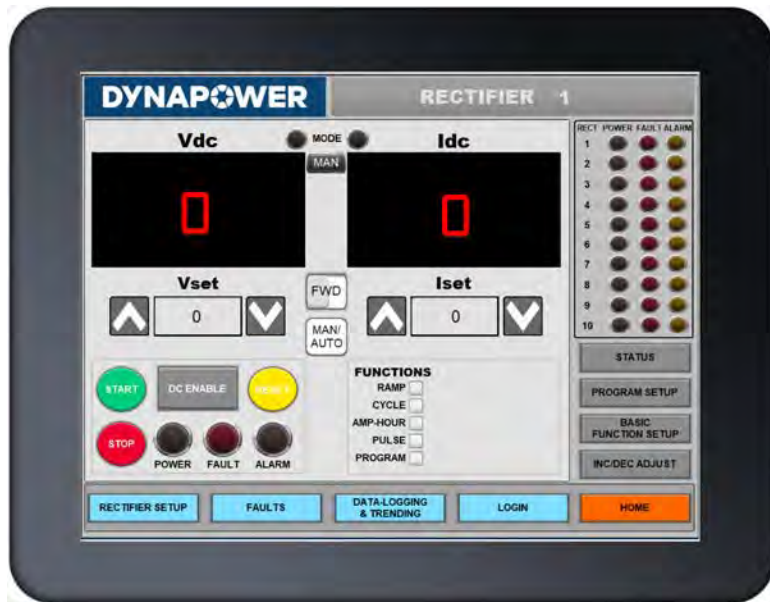
# Intuitive interface for greater control of your process



**Our advanced Touchscreen Controller uses a graphic display with menus that are easy to navigate, allowing you to quickly create recipes and view status indications, controller setup, and special operating modes.**

Easily integrated with SCR and switchmode rectifiers, this controller offers ultimate unit control that has never been faster or easier. With its time-saving profile mode, it can create, store, and use multi-step custom recipes that include ramp, dwell, pulse, amp-hour, and cycle functions. Precise adjustments can be made to voltage and current set-points, ramping time and rate, dwell time, pulse duration, cycle time, and amp-hour set-points, all with just a few quick taps.

To ensure all audit requirements are satisfied, the Touchscreen Controller features data logging for objective evidence. The data logging feature saves detailed DC voltage and current feedback & setpoint data and reports upon the completion of every successful finishing cycle. All history is easily accessible for download and review for record keeping.



The Touchscreen Controller comes built into a standard remote console, allowing for flexible controller placement. Custom control placement options are also available on request. It can also be retrofitted to existing Dynapower power supplies or SCR units supplied from other manufacturers.

## Features

**12.1" Touchscreen interface** (1024 x 768) for easy control

**Graphic display** for viewing unit output, set-point reference levels, status indication, setup, and special operating modes

**Voltage and Current set-point adjust**

**Amp-hour totalizer** with 9-digit resolution

**Amp-hour count dousing cycle.** Can program digital output to change state after 'X' Amp hours is reached and program output to stay energized for 't' seconds.

**Status screen** showing all input and fault states

In depth **active fault and history reports** to quickly identify and diagnose faults

DC voltage and current feedback and setpoint **trend display** with cycle-based **data logging**

**Polarity reversal** function (when applicable rectifier hardware present)

Selection for **customer remote interface** (AUTO MODE) via Ethernet TCP/IP, Modbus TCP or Remote Analog (4-20mA/0-10VDC)

**Temperature monitoring** readback/fault capability (Contact Dynapower for more information on hardware requirements)

## Basic Functions

**Ramp rate set-point adjust** for both voltage and current modes

**Amp-hour cycle-limit adjust**

**Pulse set-point adjust** for both voltage and current modes

**End of cycle indication**

**Cycle timer/voltage cycle limit adjust**

## Program Functions

Store up to **12 multi-step programs**

Each program contains up to **8 steps** that include **ramp, dwell, pulse, amp-hour, and cycle functions, step repeat/jump functions**

**Selectable time-base** of milliseconds, seconds, minutes, or hours for all timers

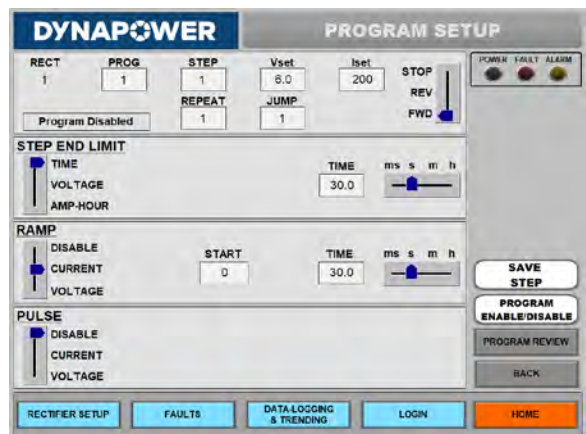
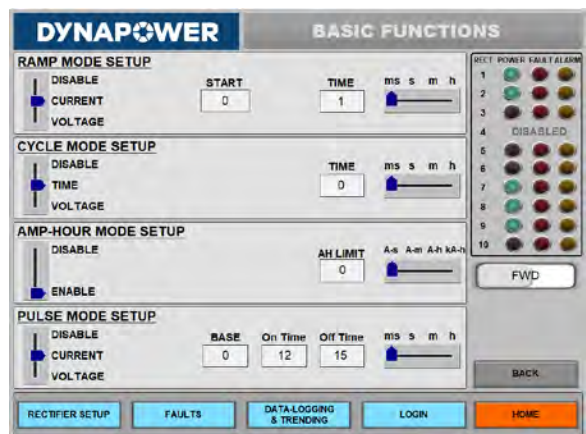
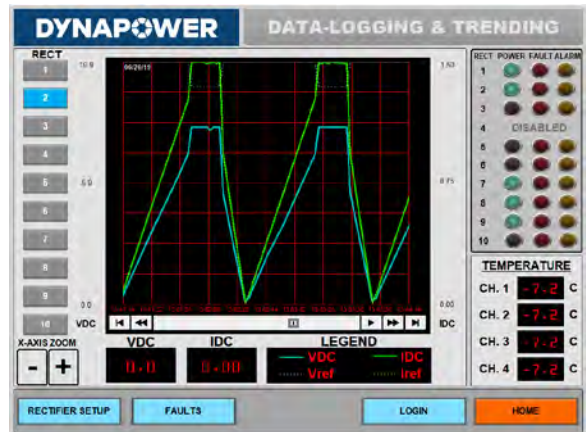
Intuitive and **visual interface to set up and review programs**

**Step repeat/jump** parameters to allow for complex waveforms

Ability to **copy and delete full programs**

Programs and set-points **automatically restored** upon power-up

**End of program indication**



**DYNAPOWER**

85 Meadowland Drive, South Burlington, Vermont USA 05403

1.802.860.7200 | sales@dynapower.com

[dynapower.com](http://dynapower.com)

